



MADE IN ITALY



Da un'infinita passione per ciò che è bello e curato nei minimi dettagli, nasce una realtà che si pone come obiettivo quello di trasmettere emozioni in ogni sua realizzazione. Con una forte componente familiare nel proprio DNA, Baxter si è costruita un'identità personale ricercando e preservando le eccellenze artigianali legate alla tradizione del territorio, riscoprendo e rivalutando maestrie quasi dimenticate e intrecciandole sapientemente a una continua ricerca.

From an infinite passion for what is beautiful and really painstaking, a company comes that sets itself the objective of conveying emotions within each one of its creations. With a strong family component running through its DNA, Baxter has built its personal identity upon seeking and preserving craft excellences bound to the territorial tradition, rediscovering and revaluing masteries almost forgotten and weaving them together skillfully with a continuous research.

'a

Small block of illegible text in a decorative frame.

29

16 sixteen point type
18 on eighteen point leads
26 ty-six point
29 on twenty-nine p
A-une boiv 10000
afaf
Da da de
a.daaa

it



Small text in a decorative frame on the wall.

Small text in a decorative frame on the wall.



14 million point type
18 as eighteen point lead
26 ty six point
29 on twenty-nine p
(A-juste boijuf jousjuf
47722222
0

it
aia
Dais in de
adaaa

29

How what
what me on

14 million point type
18 as eighteen point lead
26 ty six point
29 on twenty-nine p
(A-juste boijuf jousjuf
47722222
0

6







'a

26 by six point
29 on twenty-nine p
A-que basit jagat
afā
Dāāāāāāāā
āāāāāāāā

I see what
you mean

01

02





16
25
26
29
A-
U
i
r
f
D
s

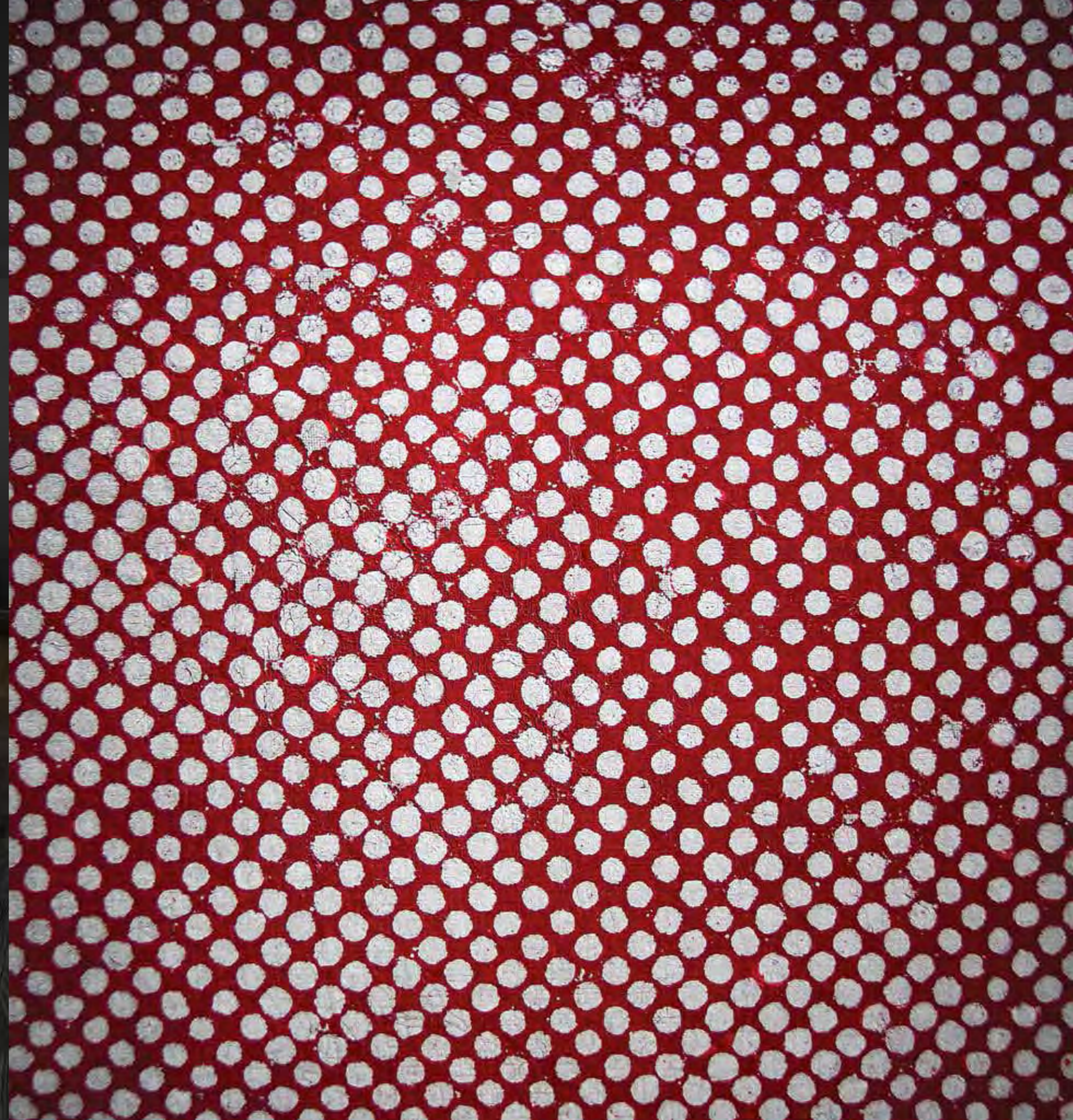
it

29

THE
21
22
23
24
25
26
27
28
29
30

6

QWERT
DFGHJ
NMöäü
opßas
cvbnm
30.,'!?





dream

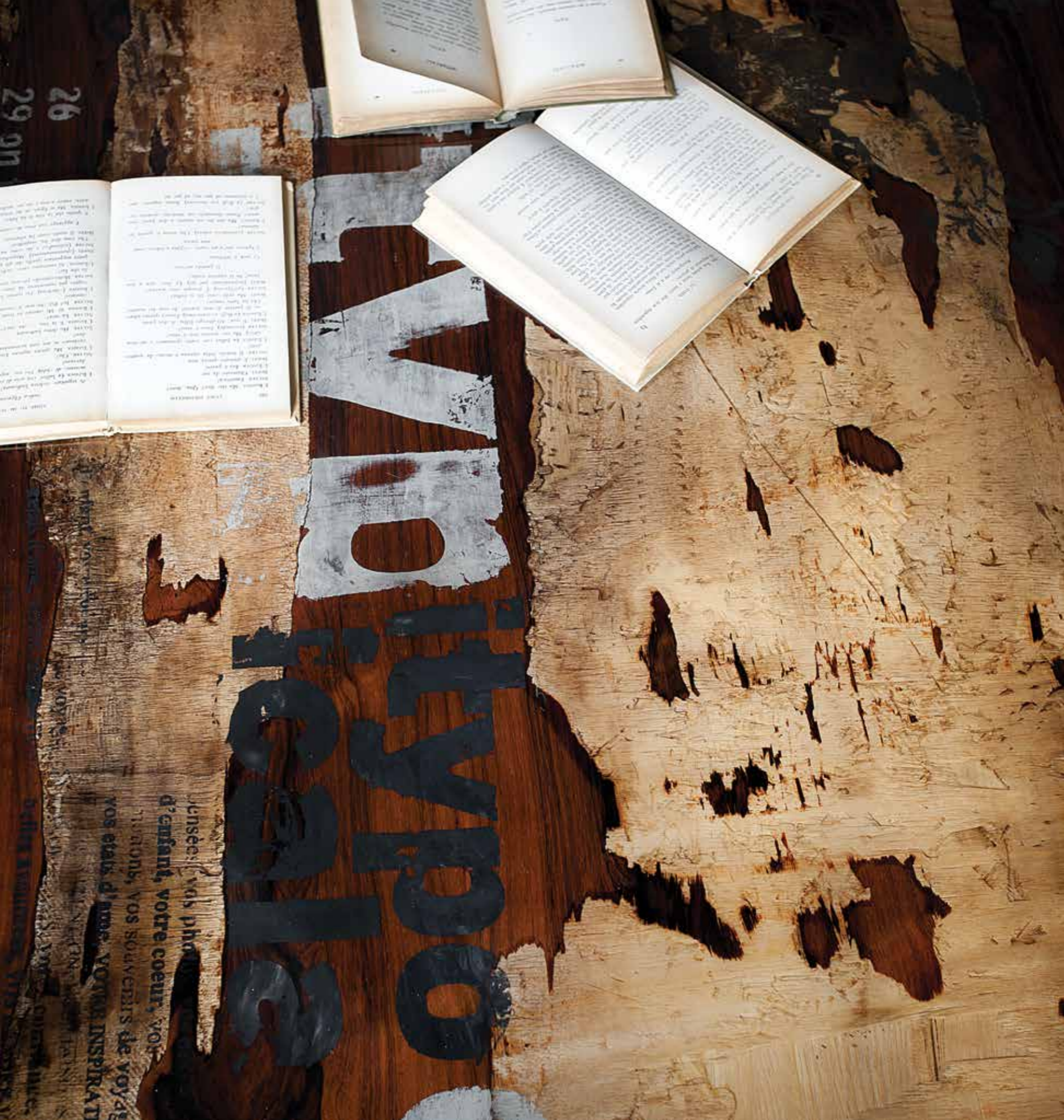
01
RML
T&G

8 *every day has to pass through a creative mind.*

l'esthétique 20/20

04 25
16 00
12 02





28. painted comber /
 27. black sea bream / kantar / carra / stroilabbrassa 28. wici
 brööm / seray / sare jo magliore / melabrassa
 29. sheepshead bream / pic / saia / kullbrösa
 30. shipeo bream / sväla / marmora / marmorer
 31. sea bream / saia / saia 32. two-banded bream / trösa /
 some bream / skalabrössa 33. spoor dog - played black
 sea / schiffhals laperle / darmhai 34. hake / esle - mel
 / jurelle - morlaza / sebach 35. sea / saia / rucka / rucka
 36. porfish / haka / enonle / hammet 37. sea / saia / rucka
 38. sea / saia / katzen-hal 39. crimson dolphin /
 lampaga / lampaga / faldirösa 39. striped snapper / kasinka /
 vada rösa / göttrösa 40. sea / saia / stana rösa / vada rösa / vada
 rösa / göttrösa 41. sea / saia / stana rösa / vada rösa / vada
 rösa / göttrösa 42. sea / saia / stana rösa / vada rösa / vada
 rösa / göttrösa 43. sea / saia / stana rösa / vada rösa / vada
 rösa / göttrösa 44. sea / saia / stana rösa / vada rösa / vada
 rösa / göttrösa 45. sea / saia / stana rösa / vada rösa / vada
 rösa / göttrösa 46. sea / saia / stana rösa / vada rösa / vada
 rösa / göttrösa 47. sea / saia / stana rösa / vada rösa / vada
 rösa / göttrösa 48. sea / saia / stana rösa / vada rösa / vada
 rösa / göttrösa 49. sea / saia / stana rösa / vada rösa / vada
 rösa / göttrösa 50. sea / saia / stana rösa / vada rösa / vada
 rösa / göttrösa

6

QWERTYUIOPAS
 DFGHJKLZXCVB
 NMöäüqwartyu
 opèædfgh ijz
 cvbnm12345678
 90.,'!?

9

THE LORD TELLS US
 THAT WE MUST
 BE PATIENT
 FOR OUR SAVIOUR
 TO COME
 AND BRING US
 INTO HIS KINGDOM
 OF GLORY
 AND WE MUST
 BE READY TO GO
 AT ANY MOMENT
 INTO HIS SERVICE
 AND BE WITNESSES
 OF HIS GLORY
 IN THE MIDST
 OF A WICKED
 AND PERSECUTING
 WORLD
 AND WE MUST
 BE FAITHFUL
 TO THE END
 OF OUR LIVES
 AND NOT DENY
 HIM AT THE
 HOUR OF NEED
 AND WE MUST
 BE PURE
 AND WITHOUT STAIN
 AND WE MUST
 BE SINCERE
 AND WITHOUT HYPocrisy
 AND WE MUST
 BE PEACELOVING
 AND WITHOUT RIVALRY
 AND WE MUST
 BE MILD AND
 WITHOUT ANGER
 AND WE MUST
 BE PATIENT
 AND WITHOUT
 REVENGE
 AND WE MUST
 BE BENEVOLENT
 AND WITHOUT
 ENVY
 AND WE MUST
 BE HONEST
 AND WITHOUT
 DECEIT
 AND WE MUST
 BE SELF-CONTROLLED
 AND WITHOUT
 DEBAUCHERY





16 sixteen point type
18 on eighteen point lead
26 ty-six point
29 on twenty-nine p
Α-ηηε βοιηη ιοηηηη
PP-PPPP
U
af2
Da da da De
d.daaa

it

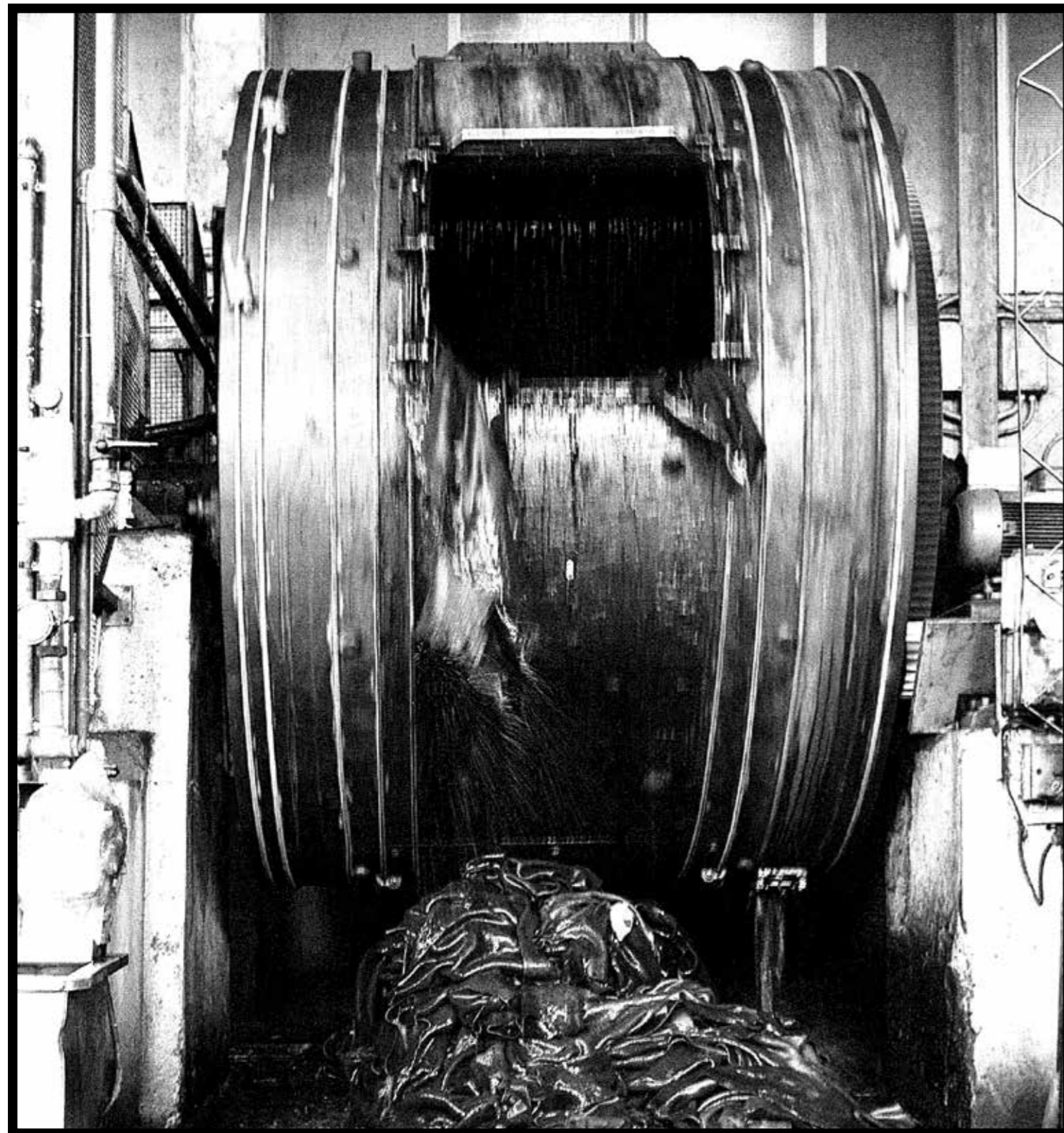
29

I see what
you mean









un'anima

L'attore principale di questo racconto è uno solo, il cuoio. Affidato fin dal principio a maestri conciatori custodi di antiche tradizioni, viene sapientemente lavorato prevalentemente nel suo spessore originale e tinto con aniline naturali, nel pieno rispetto delle sue proprietà intrinseche. Poniamo inoltre particolare attenzione all'ecosostenibilità e come azienda certificata ISO 14001 attuiamo logiche produttive che minimizzano l'impatto ambientale. Cultura, qualità ed etica, ecco il connubio grazie al quale il cuoio viene trasformato nella materia prima pregiata e unica nel settore, simbolo dell'eccellenza Baxter.

There is just one main star of this tale, leather. Entrusted from the very outset to master tanners, keepers of ancient traditions, it is skilfully worked mainly in its original thickness and tint with natural anilines, in complete respect of its intrinsic properties. Moreover, we pay particular attention to the eco-sustainability and, as ISO 14001 certificated company, we bring about production logics that minimize the environmental impact. Culture, quality and ethics, this is the combination thanks to which the leather is transformed into the fine and unique raw material of the industry, symbol of Baxter excellence.

soul





























63

Simplicity is the ultimate form of sophistication.

find ourselves moving
site from where we
ways to overcome
tate and to maintain
dialogue. Positive
us in the right
ty, and promote
positive inner









La mano

L'attenzione personale è il credo che contraddistingue ogni aspetto dell'attività e della produzione Baxter. Ogni processo di lavorazione ha un'elevatissima componente manuale, consentendo un accurato controllo di ogni minimo dettaglio. La produzione altamente customizzata tiene conto delle specifiche esigenze del cliente. In questo modo inizia un'esperienza totale ed emozionante, capace di avvolgere completamente chi sceglie Baxter.

Personal attention is the belief that distinguishes every aspect of Baxter activity and production. Every production process has a very high manual component, allowing for careful control of every single detail. The highly customized production is done only to order and takes account of the specific requirements of the customer. Thus a total experience begins, complete and exciting, able to close in completely upon whom chooses Baxter.

craftmanship











LIVING IN STYLE PARIS
THOMAS HAMEL













differfo

Con queste premesse ogni singolo prodotto è espressione diretta e tangibile della nostra filosofia. Lasciamo integra e inalterata la forte componente naturale del cuoio, che propone un disegno caratteristico in ogni pezza scelta e un'elevata capacità traspirante, garantendo il massimo comfort ai prodotti per cui è destinato. Abbiamo un elevato grado di manualità produttiva, esaltato da una contaminazione artistica singolare. Tutto contribuisce a dare vita ogni volta a un pezzo unico, irripetibile.

With this in mind, every single product is a direct and tangible expression of our philosophy. We leave intact and unaltered the strong natural component of the leather, which offers a characteristic design in every single piece, together with great breathability, guaranteeing the maximum comfort to the products for which it is used. We have a high level of manual production, enhanced by a singular artistic blend. All this contributes to giving life to a unique piece every single time, irreplicable.

different





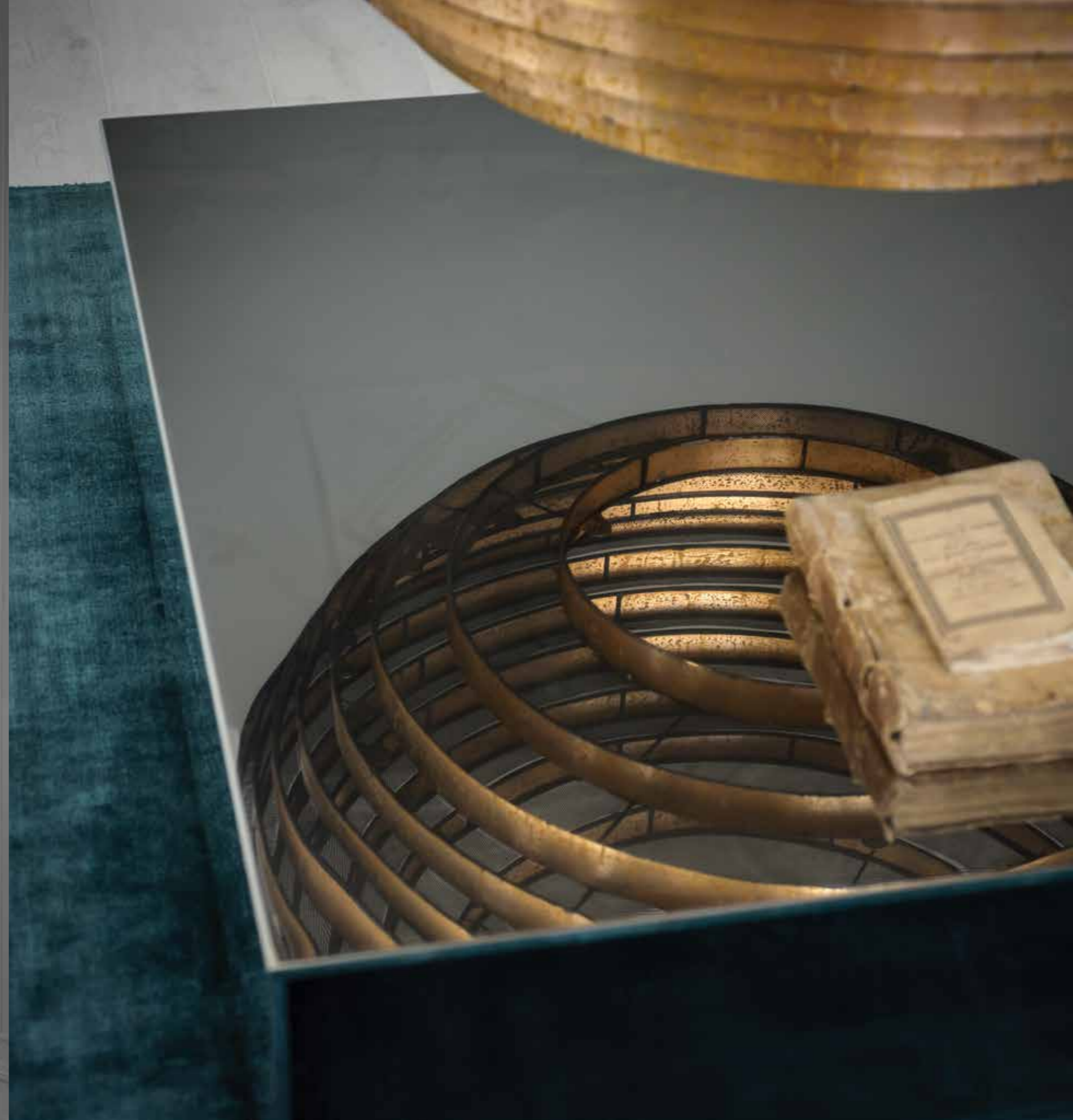


































domani

Non puoi sapere dove vai se non sai da dove vieni. Se è vero che Baxter ha tra i suoi punti di forza un passato fatto di tradizioni e solide radici culturali, è anche vero che ha saputo trasportare questo bagaglio ai giorni nostri, mantenendo manualità e attenzione al cliente in un mondo sempre più industrializzato e impersonale. La costante attenzione al design creativo e le energie dedicate alla ricerca, contribuiscono a determinarne lo stile estremamente riconoscibile, capace di resistere al tempo che passa.

You cannot know where you are going unless you know where you have come from. While it is true that Baxter has among its strong points a past history made of traditions and solid cultural roots, it is also true that it has been able to transport this history to the present day, maintaining manual dexterity and attention to customers in a world that is increasingly industrialized and impersonal. Its constant attention to creative design and the energies dedicated to research contribute to determining its extremely recognizable style, able to withstand the passing of time.

tomorrow



*viene a col
la bellezza d*















To a minimum
si, rathu fhand
Illius







USA
SICCOLO
L'AMERICA
L'AMERICA

il y a des mots qui font vivre



**C'EST LE
COURAGE
QUI
COMPTE**



divano · sofa **Budapest Soft**
300 x 140 h76 | Plume Gris

cuscino · cushion **Budapest Soft**
48 x 48, 60 x 60 | Plume Gris

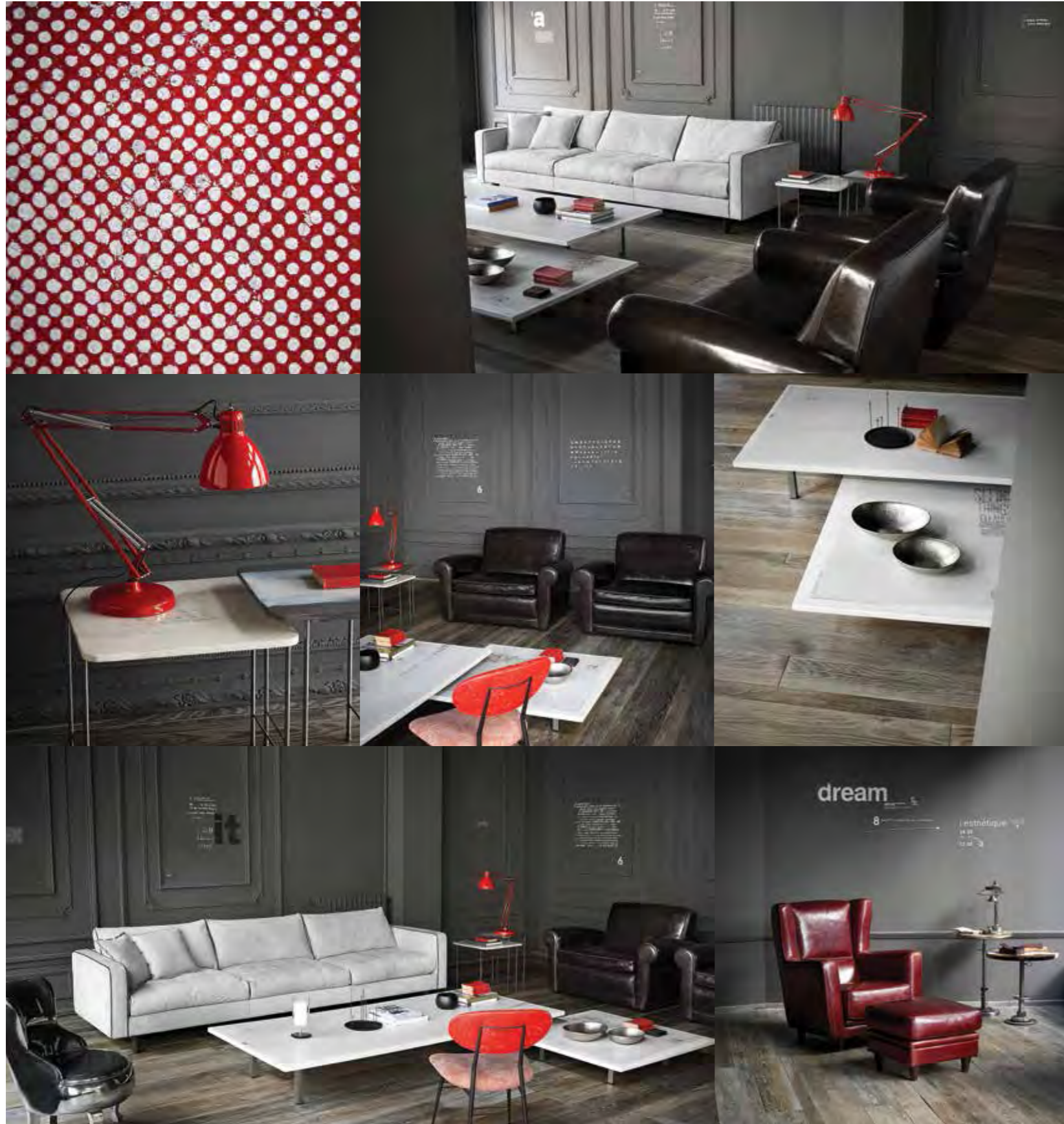
poltrona · armchair **Berlino**
72 x 85 h76 | Tuscany Elba

poltrona · armchair **Diner**
85 x 87 h59 | Nabuck Light Grey

cuscino · cushion **Diner**
42 x 42 | Nabuck Light Grey

tavolino · small table **Trinity**
150 x 150 h30 | Old Shabby Pietra





divano · sofa **Stoccolma**
300 x 98 h85 | Kashmir Nuage, profilo · piping Plume Gris

cuscinio · cushion **Housse**
48 x 48 | Kashmir Nuage

poltrona · armchair **Bergère**
83 x 95 h98 | Tuscany Red

pouf **Bergère**
57 x 57 h46 | Tuscany Red

poltrona · armchair **Mickey Extra**
130 x 102 h83 | Tuscany Grosseto

poltrona · armchair **Sellerina Aluminium**
59 x 66 h80

tavolino · small table **Table-Au**
40 x 40 h50 | Resina lucida grigio scuro · Glossy dark grey resin

tavolino · small table **Table-Au**
50 x 50 h45 | Resina lucida grigio chiaro · Glossy light grey resin

tavolino · small table **Table-Au**
100 x 100 h20, 218 x 100 h30 | Resina opaca grigio chiaro · Matte light grey resin

tavolini · small tables | **Unique Collection**

sedia · chair **Pop** | **Unique Collection**

lampada da tavolo · table lamp **JJ**
base Ø21, diffusore · diffuser Ø16 h18 | Rosso lucido · Glossy red



divano · sofa **Alfred**
280 x 140 h78 | Rhino Ebony

cuscinio · cushion **Chassis**
48 x 48, 60 x 60 | Plume Glacé

cuscinio · cushion **Housse**
60 x 60 | Plume Glacé

cuscinio · cushion **Net**
40 x 40, 60 x 60

poltrona · armchair **Amburgo** | Special Edition **Draga**
97 x 97 h90

poltrona · armchair **Housse**
110 x 113 h75 | Kashmir Nuage

poltroncine · little armchairs **Deshabillé** | **Unique Collection**

tavolini · small tables | **Unique Collection**





divano · sofa **Joyce**
265 x 102 h74 | Kashmir Nuage, seduta · seat Texture Grid, profilo · piping Kashmir Nuage

cuscinio · cushion **Joyce**
40 x 40, 50 x 50 | Kashmir Nuage, Kashmir Nuage Printed Micro Pois

poltrona · armchair **Bergère Longe** | Special Edition **Printed**
107 x 105 h79 | Bianco · white. Grigio · grey

poltrona · armchair **Dall**
70 x 68 h77 | Tuscany Elba, struttura sabbiata testa di moro · dark brown sand-blasted structure

poltrona · armchair **Etienne**
80 x 88 h73 | Kashmir Nuage

poltrona · armchair | **Unique Collection**

letto · bed **Simons** | Special Edition **Belle De Jour**
207 x 218 h153 | Giroletto e testata · bedframe and headboard Nabuck Light Grey, interno testata · inner Kashmir Nuage, profilo · piping Kashmir Nuage Printed Noice

completo letto · bed set **Midnight** | Powder, Avio

tavolino · small table **Liquid**
Ø33 h53 | Blu · blue. Melanzana · aubergine. Verde · green
Ø40 h44 | Melanzana · aubergine
Ø50 h49 | Blu · blue. Verde · green

tavolino · small table **Liquid Coffee**
80 x 80 h38, 100 x 100 h30 | Bianco/nero · black/white

tavolo · table **Liquid Lunch**
120 x 120 h76 | Melanzana · aubergine

sedia · chair **Colette**
54 x 59 h86 | Kashmir Nuage, profilo · piping Plume Gris

sedia · chair **Pop** | **Unique Collection**





divano · sofa **Mio**
 196 x min78/max114 h89 | Struttura · structure Kashmir Nuage, profilo · piping Plume Noir Printed Clear Pois. Seduta · seat Kashmir Jade Printed Clear Pois, profilo · piping Kashmir Nuage

poltrona · armchair **Dolly**
 73 x 83 h97 | Nabuck Rose, profilo · piping Kashmir Nuage

poltrona · armchair **Lola**
 73 x 86 h90 | Tuscany Cortona

poltrona · armchair **Sellerina**
 55 x 64 h83 | Tuscany Red

tavolino · small table **Liquid**
 Ø33 h53 | Melanzana · aubergine
 Ø40 h44 | Melanzana · aubergine

tavolino · small table **Liquid Coffee**
 65 x 65 h45 | Senape · mustard

tavolo · table **Liquid Lunch**
 Ø120 h76 | Blu · blue

sedia · chair **Colette**
 54 x 59 h86 | Schienale · back Nabuck Green. Seduta · seat Plume Gris Printed Twill. Profilo · piping Plume Gris

sedia · chair **Odette**
 43 x 46 h91 | Plume Gris Printed Wide Pied De Poule, Plume Gris Printed Twill

sospensione · hanging lamp **Guggie**
 Ø30 h24, Ø70 h55

Wallpaper
 Butterfly, Lettering, Pied de Poule, Newspaper



divano · sofa **Monsieur**
320 x 120/125 h76 | Nabuck Light Grey

cuscinio · cushion **Belle De Jour**
45 x 20 | Petalo · petal Plume Noir, Soft Grey. Strisce · striped Nabuck Light Grey. Zick zack Nabuck Rose, Plume Noire
45 x 30 | Petalo · petal Nabuck Rose
45 x 45 | Petalo · petal Plume Gris. Strisce · striped Nabuck Light Grey, Plume Gris. Zick zack Plume Gris, Plume Noir
55 x 55 | Strisce · striped Plume Gris.

tavolino · small table **Miroir**
124 x 124 h34 | Kashmir Nuage

tavolino · small table **Printable**
35 x 35 h42,5 | Rombo · rhombus
40 x 40 h45 | Quadrato · square
50 x 50 h47,5 | Spigato · twill

sedia · chair **Colette**
54 x 59 h86 | Nabuck Rose, profilo · piping
Kashmir Nuage

tappeto · carpet **Devoré** | **Unique Collection**
Grigio · grey



panca · bench **Garçon** | Special Edition **Belle De Jour**
300 x 70 h42 | Plume Gris

cuscinio · cushion **Housse**
48 x 48 | Nabuck Light Grey, Plume Gris
60 x 60 | Plume Gris

poltrona · armchair **Charmine Longe**
82 x 90 h68 | Tuscany Piombino

poltrona · armchair **Molly**
94 x 105 h100 | Kalgan White

letto · bed **Paris**
215 x 255 h92 | Bo.Hemian Siberia

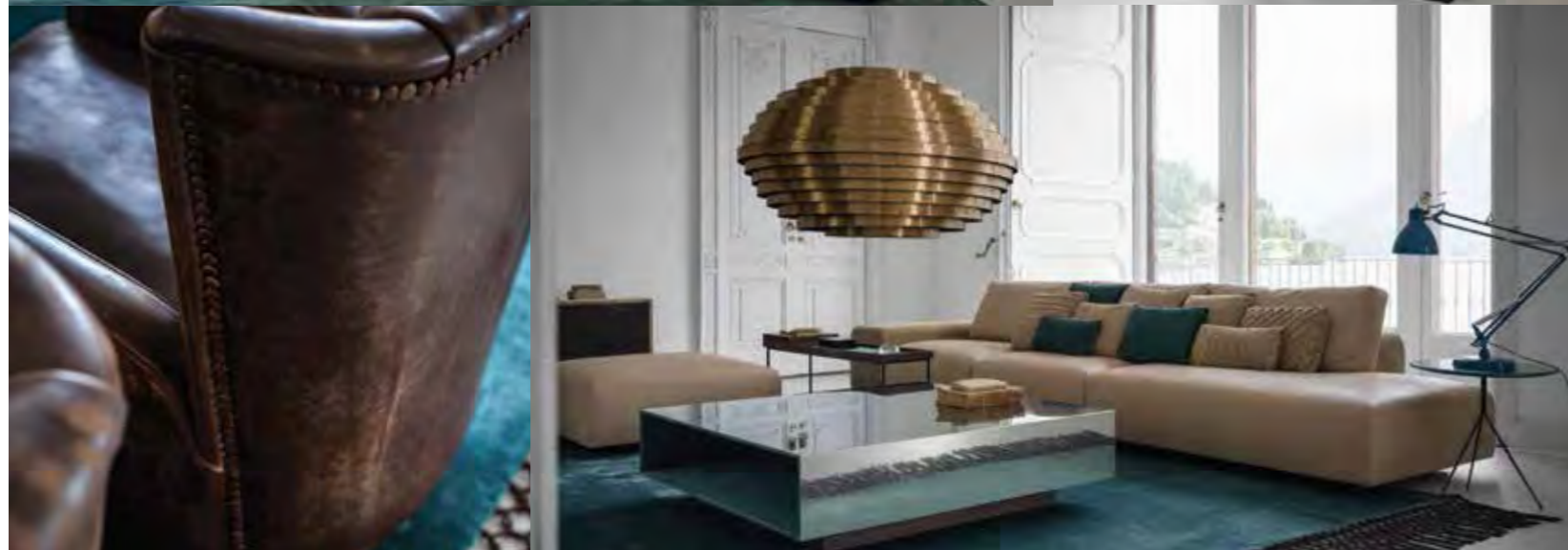
completo letto · bed set **Midnight** | Grape, Gun

tavolino · small table **Damier**
30 x 30 h43,5 | Tuscany Capalbio
120 x 30 h47 | Vassoio specchio · mirror tray. Scatola
noce · walnut box

tavolino · small table **Liquid**
Ø33 h53, Ø40 h44 | Melanzana · aubergine

tavolino · small table **Liquid Coffee**
Ø80 h38 | Melanzana · aubergine





cuscinò · cushion **Belle De Jour**

45 x 20

Petalo · petal Soft Sand. Zick zack Kashmir Jade

45 x 30

Petalo · petal Soft Sand. Strisce · Striped Kashmir Jade. Zick zack Plume Ciré Crème

45 x 45

Petalo · petal Kashmir Jade. Strisce · Striped Soft Sand. Zick zack Plume Ciré Crème

cuscinò · cushion **Housse**

48 x 48 | Soft Sand

divanetto · small table **Mademoiselle**

153 x 100 h65

Kashmir Nuage, impuntura · stitching Kashmir Jade

composizione · composition **Monsieur Modular**

125 x 120 h76, 240 x 120 h76, pouf 94 x 94 h40

Plume Ciré Crème, Soft Sand

poltrona · armchair **Diner**

85 x 87 h59 | Kashmir Jade

cuscinò · cushion **Diner**

42 x 42 | Kashmir Jade

poltrona · armchair **Lola**

73 x 86 h90 | Tuscany Cortona

tavolino · small table **Da-Da**

Ø55 h58/74, Ø70 h58/74

Base in ferro e ottone, piano in legno decorato a mano

Base in iron and brass, wooden top decorated by hand

tavolino · small table **Damier**

30 x 30 h43,5 | Tuscany Cortona

120 x 30 h47

Vassoio · tray Kashmir Jade

Scatola noce con interno specchio · walnut box with mirror inside

tavolino · small table **Diadema**

Ø120 h52

Base in legno sagomato, piano in legno decorato a mano

Shaped wooden base, wooden top decorated by hand

tavolino · small table **Liquid**

Ø33 h53, Ø40 h44, Ø50 h49

Petrolio · petroleum

tavolino · small table **Miroir**

124 x 124 h34 | Soft Oil

tavolino · small table **Printable**

35 x 35 h42,5

Stellina · little star. Rombo · rhombus

40 x 40 h45

Pois grande · big pois. Quadrato · square

50 x 50 h47,5

Pois piccolo · little pois. Spigato · twill

libreria · bookcase **Bourgeois**

150 x 45 h300 | River Nelson

mobile basso · low cabinet **Bourgeois**

244 x 50 h64 | Soft Sand

tappeto · carpet **Devoré** | **Unique Collection**

Verde · green

tappeto · carpet **Fringes**

400 x 300 | Verde con frange marroni

Green with brown fringes

lampada da tavolo · table lamp **JJ**

base Ø21, diffusore · diffuser Ø16 h18

Ottanio · octane

sospensione · hanging lamp **Our Lady**

Ø110 h60



poltroncina · little armchair **Decor** gambe in pelle · leather legs
63 x 64 h85 | Tuscany Capraia

poltrona · armchair **Mickey**
97 x 102 h 83 | River Nelson, profilo · piping Tuscany Capraia

tavolo · table **Bourgeois**
300 x 140 h74 | Base in fusione di ghisa, piano in massello di noce canaletto
Base in cast iron, solid walnut top

sedia · chair **Chiavarina Maxi**
43 x 50 h92 | River Nelson

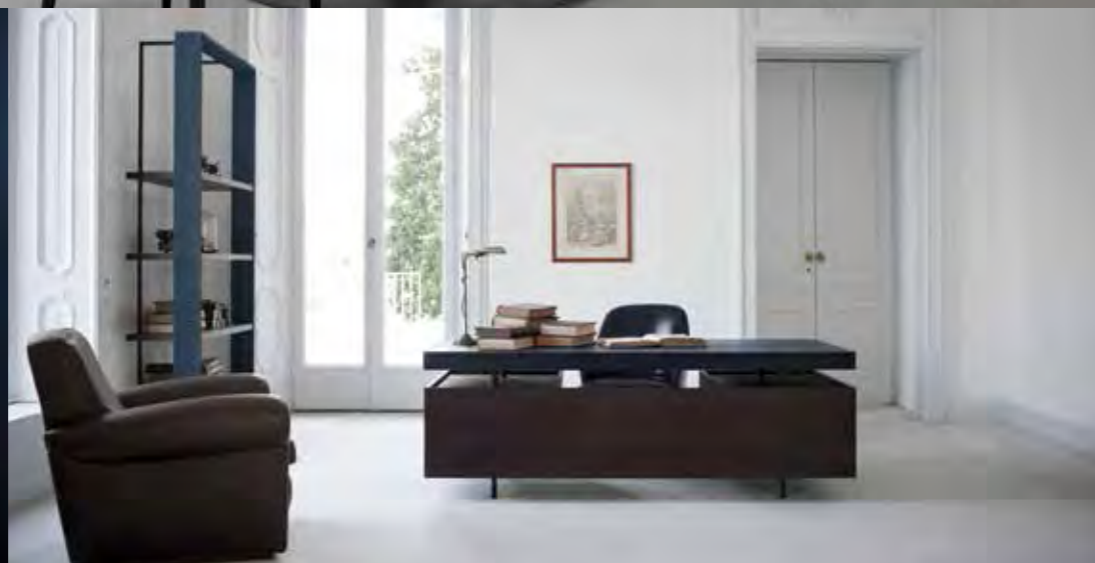
sedia · chair **Odette**
43 x 46 h91 | Plume Gris

libreria · bookcase **Bourgeois**
120 x 45 h240 | Soft Blue

libreria · bookcase **Bourgeois** con cassetto · with drawer
120 x 45 h240 | Plume Gris

scrivania · desk **Bourgeois**
200 x 90 h72 | Plume Blue, Tuscany Capraia

sospensione · hanging lamp **Q2**
Ø200 h200





divano · sofa **Alfred** | Special Edition **Trench**
280 x 140 h78 | scocca · body River Nelson

poltrona · armchair **Charlotte**
87 x 107 h89 | Plume Glacé

cuscino · cushion | **Unique Collection**

poltrona · armchair **Ona**
75 x 75 h96 | Soft Oil

poltrona · armchair **Rio Bassa**
76 x 106 h64 | Kashmir Boue

letto · bed **Alfred Soft**
210 x 242 h103 | Sinai Cassel

completo letto · bed set **Midnight** | Powder, Gun

tavolino · small table **Da-Da**
Ø45 h58/74 | Base in ferro e ottone, piano in legno decorato a mano
Base in iron and brasses, wooden top decorated by hand

tavolino · small table **Table-Au**
40 x 40 h50, 50 x 50 h45, 60 x 60 h40
Resina lucida ottanio · glossy octane resin

tavolo · table **Typo**
300 x 100 h77 | Struttura in legno decorato a mano e laccato lucido
Wooden frame decorated by hand and glossy lacquered

sedia · chair **Decor** gambe in pelle · leather legs
50 x 60 h97 | Tuscany Lucca

sedia · chair **Pop** | **Unique Collection**

libreria · bookcase **Fly**
45 x 40 h250

lampada da tavolo · table lamp **JJ**
base Ø21, diffusore · diffuser Ø16 h18 | Ottanio lucido · glossy octane

Artwork **2b-ahead**

Photo **Andrea Ferrari**

Press **Grafica Gioia**

Printed in Italy, September 2013



Baxter è dotata di un Sistema di Gestione Ambientale in conformità alla norma UNI EN ISO 14001.
Baxter is provided by an Environmental Management System according to the UNI EN ISO 14001 standard.

Le tecniche di stampa non consentono una perfetta riproduzione delle tonalità di colore, che vanno pertanto considerate come puramente indicative. Anche le illustrazioni e descrizioni presentate si intendono fornite a titolo indicativo. L' Azienda si riserva per tanto di apportare, in qualsiasi momento e senza preavviso, quelle modifiche che ritenesse utili per qualsiasi esigenza di carattere produttivo e commerciale.
Printing does not allow any perfect colour reproduction, therefore colours in this catalogue are not binding. Pictures and descriptions are not binding as well. The company reserves itself the right to introduce any possible necessary production or marketing change at any time without any previous notice.



Baxter srl | 22040 Lurago d'Erba (CO) Italy | Via Costone, 8 | T +39 031 35999 F +39 031 3599999 | www.baxter.it info@baxter.it